

KATAVASIAS OF PASCHA – ODES 1-8

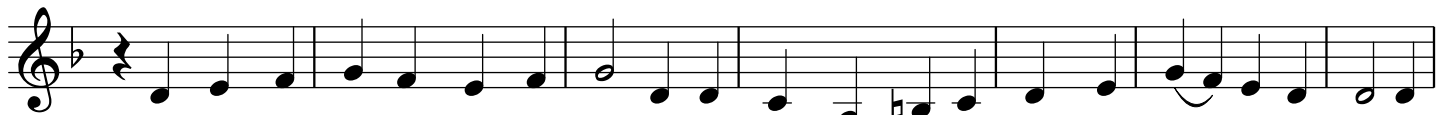
Ἦχος α' — First Tone

N. Roubanis / A. Tsiknopoulos

*Ὦδή α'.*



Ἄ-να - στά-σε-ως ἡ - μέ-ρα λαμ-πρυν - θῶ - μεν Λα - οί, Πά - σχα Κυ - ρί - ου, Πά-σχα  
A-na - sta-se-os i - me-ra lam-bron - tho-men La - i, Pa - scha Ky - ri - ou, Pa-scha,



ἐκ γὰρ θα - νά-του πρὸς ζω - ἦν, καὶ ἐκ γῆς πρὸς οὐ-ρα - νόν, Χρι - στὸς ὁ Θε - ὄς, ἡ-  
ek ghar tha - na-tou pros zo - in, ke ek ghis pros ou-ra-non, Chri - stos o The - os, i-

*Ὦδή γ'.*



- μᾶς δι - ε - βί-βα-σεν, ἐ-πι - νί-κι-ον ἄ - δον - τας. Δεῦ-τε πό-μα πί-ω-μεν και-  
- mas dhi-e - vi-va-sen, e-pi - ni-ki-on a - don - das. Dhef-te po-ma pi-o-men ke-



- νόν, οὐκ ἐκ πέ-τρας ἄ - γό - νου τε-ρα-τουρ-γού-με - νον, ἀλλ' ἀ-φθαρ-σί-ας πη-γὴν, ἐκ  
- non, ouk ek pe-tras a - gho-nou te-ra-tour-ghou-me-non, all' a-fthar-si-as pi-ghin, ek

*Ὦδή δ'.*



τά - φου ὁμ - βρή-σαν-τος Χρι - στοῦ, ἐν ᾧ-στε-ρε - οὐ - με - θα. Ἐ-πὶ τῆς  
ta - fou om - vri-san-dos Chri - stou, en o ste-re - ou - me - tha. E-pi tis



θεί-ας φυ-λα - κῆς ὁ θε-η - γό - ρος Ἄβ-βα - κούμ, - στή-τω μεθ' ἡ - μῶν καὶ δει-  
thi-as fi - la - kis o the-i - gho - ros Av-va - koum, sti - to meth' i - mon ke dhi-



- κνύ-τω, φα-εσ - φό-ρον Ἄγ-γε-λον, δι - α-πρυ-σί-ως λέ-γον - τα. Σή-με-ρον-σω-τη-  
- kni - to, fa-es - fo-ron An-ge-lon, dhi - a pri-si-os le-ghon-da, Si-me-ron so-ti-

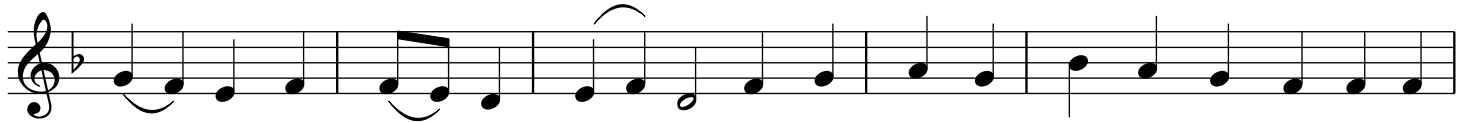


- ρί - α τῶ Κό - σμῳ, ὅ - τι ἀ - νέ - στη Χρι - στός ὡς παν - το - δύ - να - μος.  
 - ri - a tō ko - smo, o - ti a - ni - sti Chri - stos os pan - do - dhi - na - mos.

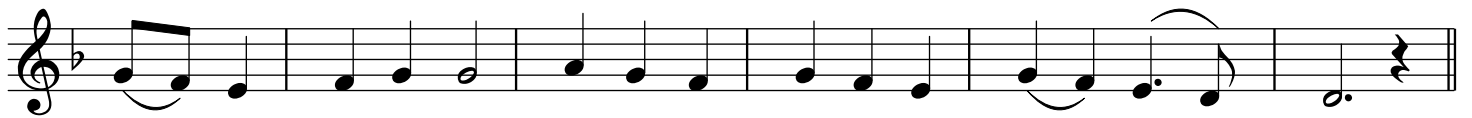
*Ὦδὴ ε΄.*



Ὁρ - θρί - σω - μεν ὄρ - θρου βα - θέ - ος, καὶ ἀν - τὶ μυ - ρου τὸν ὕ - μνον προ -  
 Or - thi - so - men or - throu va - the - os, ke an - di mi - rou ton i - mnon pro -



- σοί - σο - μεν τῶ Δε - σπό - τη, καὶ Χρι - στὸν ὀ - ψό - με - θα, δι - και - ο -  
 - si - so - men tō Dhe - spo - ti, ke Xri - ston o - pso - me - tha, dhi - ke - o -



- σύ - νης ἡ - λι - ον, πᾶ - σι ζω - ἦν ἀ - να - τέλ - λον - τα.  
 - si - nis i - li - on, pa - si - zo - in a - na - tel - lon - da.

*Ὦδὴ στ΄.*



Κα - τὴλ - θες ἐν τοῖς κα - τω - τά - τοις τῆς γῆς, καὶ συ - νέ - τρι - ψας μο - χλοὺς αἰ - ω -  
 Ka - til - thes en tis ka - to - ta - tis tis ghis, ke si - ne - tri - psas mo - chlous e - o -



- νί - ους, κα - τό - χους πε - πε - δη - μέ - νων Χρι - στέ, καὶ τρι - ἡ - με - ρος  
 - ni - ous, ka - to - chos pe - pe - dhi - me - non Chri - ste, ke tri - i - me - ros



ὡς ἐκ κή - τους Ἰ - ω - νᾶς, ἐ - ξα - νέ - στης τοῦ τά - φου.  
 os ed ki - tous I - o - nas, e - xa - ne - stis tou ta - fou.

Ὦδὴ ζ΄.



Ὁ Παῖ-δας ἐκ κα - μί-νου ῥυ - σά-με-νος, γε - νό - με-νος ἄν-θρω - πος,  
O Pe - dhas ek ka - mi-nou ri - sa-me-nos, ghe - no - me-nos an-thro - pos,

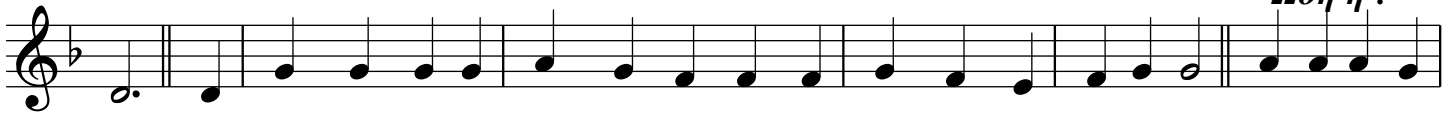


πά-σχει ὡς θνη-τός, καὶ δι-ὰ Πά-θους τὸ θνη-τόν, ἀ-φθαρ-σί - ας ἐν - δύ - ει εὐ-  
pa-schi os thni-tos, ke dhi-a Pa-thous to thni-ton, a-fthar - si - as en - dhi - i ef-



- πρέ-πει-αν, ὁ μό-νος εὐ-λο-γη - τὸς τῶν Πα - τέ-ρων, Θε - ὸς καὶ ὑ-πε - ρέν - δο-  
- pre-pi - an, o mo-nos ev-lo-ghi - tos ton Pa - te - ron, The - os ke i-per - en - dho-

Ὦδὴ η΄.



- ξος. Αἰ - νοῦ - μεν εὐ-λο - γού - μεν καὶ προ-σκυ-νοῦ-μεν τὸν Κύ-ρι-ον. Αὐ-τὴ ἡ-κλη-  
- xos. E - nou-men, ev-lo - ghou-men ke pro-ski - nou-men ton Ky-ri-on. Af-ti i kli-



- τὴ καὶ ἀ - γί - α ἡ - μέ - ρα, ἡ - μί-α τῶν-σαβ - βά-των, ἡ βα-σι - λικὴ καὶ κυ-  
- ti ke a - ghi - a i - me-ra, i mi-a ton Sav - va-ton, i va-si - lis ke ky-



- ρί - α, ἐ-ορ - τῶν ἐ-ορ - τή, καὶ πα - νή-γυ-ρις ἐ - στὶ πα-νη - γύ-ρε-ων, ἐν  
- ri - a, e-or - ton e-or - ti, ke pa - ni-ghi-ris e - sti pa-ni - ghi-re-on, e-

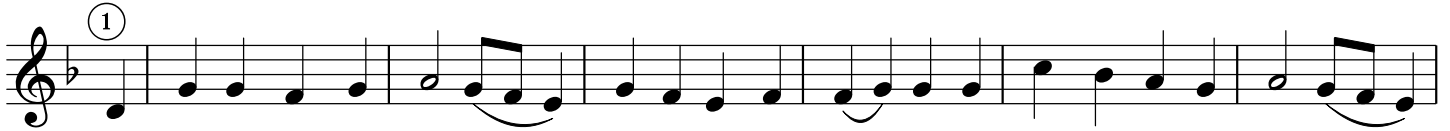


- ἡ εὐ-λο - γοῦ - μεν, Χρι - στὸν εἰς τοὺς αἰ - ῶ - νας.  
- ni ev-lo - ghou-men, Chri - ston is tous e - o - nas.

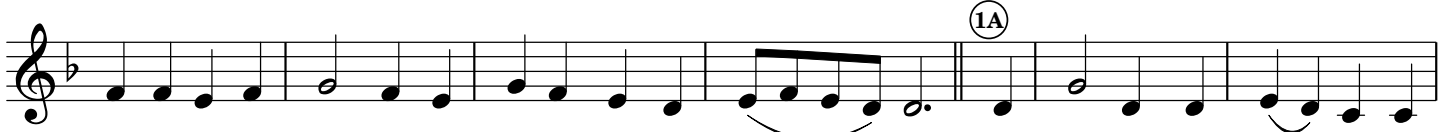
MEGALYNARIA AND NINTH ODE OF PASCHA

Ἦχος α΄

Tsiknopoulos/Roubanis



Με - γά-λυ-νον, ψυ - χή μου, τὸν ἐ-θε-λου - σί - ως πα - θόν-τα καὶ τα - φέν-τα  
 Me - gha-li - non, psi - chi - mou, ton e-the-lou - si - os pa - thon-da ke ta - fen-da



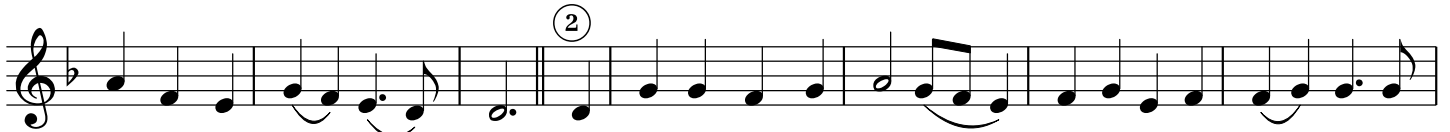
καὶ ἐ-ξα-να - στάν-τα τρι - ή-με-ρον ἐκ τά - φου. Φω - τί-ζου, φω - τί - ζου, ή  
 ke e-xa-na - stan-da tri - i-me-ron ek ta - fou. Fo - ti-zou, fo - ti - zou, i



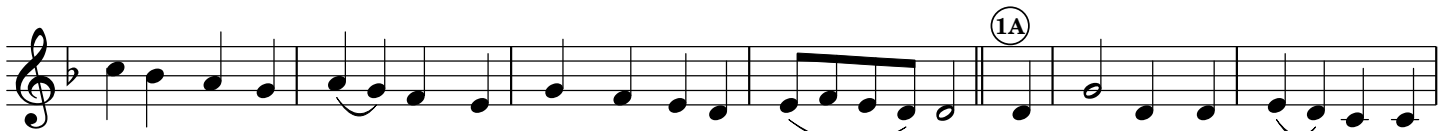
νέ-α Ἰ-ε - ρου-σα-λήμ· ή γὰρ δό-ξα Κυ - ρί - ου ἐ-πὶ σὲ ἀ-νέ-τει-λε. Χό - ρε-ve  
 ne-a I - e - rou-sa - lim, i ghar dho-xa Ky - ri - ou e-pi se a-ne-ti - le. Cho - re-ve



νῦν, καὶ ἀ - γάλ - λου Σι-ών, σὺ δὲ ἀ - γνή, τέρ-που Θε-ο - τό - κε, ἐν τῇ ἐ-  
 nin ke a - ghal - lou Si-on, si dhe agh - ni, ter-pou, The-o - to - ke, en ti e-



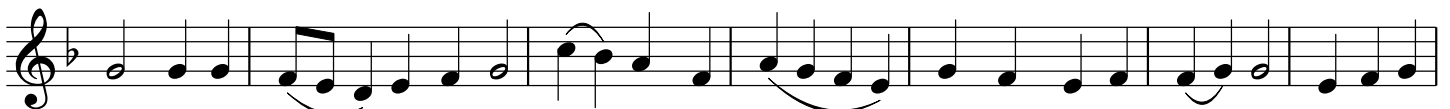
- γέρ-σει τοῦ τό - κου σου. Με - γά-λυ-νον, ψυ - χή μου, τὸν ἐ-ξα-να - στάν-τα τρι-  
 - yer - si tou to - kou sou. Me - gha - ly - non, psi - chi mou, ton e - xa - na - stan - da tri -



- ή-με-ρον ἐκ τά - φου Χρι-στὸν τὸν ζω-ο - δό - την. Φω - τί-ζου, φω - τί - ζου, ή  
 - i-me-ron ek ta - fou Chri - ston ton zo - o - do - tin. Fo - ti-zou, fo - ti - zou, i

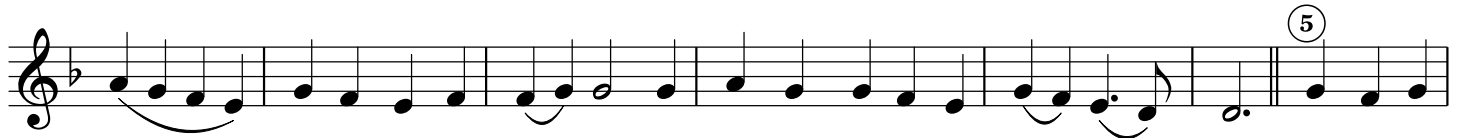


νέ-α Ἰ-ε - ρου-σα-λήμ· ή γὰρ δό-ξα Κυ - ρί - ου ἐ-πὶ σὲ ἀ-νέ-τει-λε. Χό - ρε-ve  
 ne-a I - e - rou-sa - lim, i ghar dho-xa Ky - ri - ou e-pi se a-ne-ti - le. Cho - re-ve



νῦν, καὶ ἀ - γάλ - λου Σι-ών, σὺ δὲ ἀ - γνή, τέρ-που Θε-ο - τό - κε, ἐν τῇ ἐ-  
 nin ke a - ghal - lou Si-on, si dhe agh - ni, ter-pou, The-o - to - ke, en ti e-





- στοί, ἄγ-κυ-ραν ἐλ - πί - δος, κα - τέ-χον-τες ἀ-γαλ - λό - με - θα. Δό - ξα Πα-  
 - sti, an-gi-ran el - pi-dhos, ka - te-chon-des a-ghal - lo - me - tha. Dho-xa Pa-



- τρι καὶ Υἱ - ῶ καὶ Ἄ - γί - ῶ Πνεύ-μα-τι. Με - γά-λυ-νον, ψυ - χή μου, τῆς τρι-συ-πο-  
 - tri ke I - ō ke A - ghi - ō Pnev-ma-ti; Me-gha-li-non, psi - chi mou, tis tri-si-po-



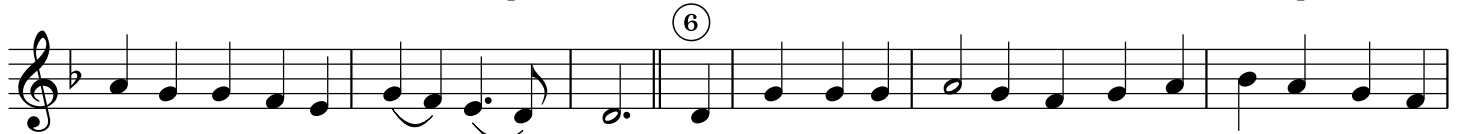
- στά - του καὶ ἀ - δι-αι - ρέ - του Θε - ό-τη-τος τὸ κρά - τος. Ὡ Πά - σχα τὸ  
 - sta - tou ke a-dhi-e - re - tou The - o-ti-tos to kra - tos. O Pa-scha to



μέ - γα, καὶ ἰ - ε - ρώ-τα-τον Χρι-στέ, ὦ σο - φί-α καὶ Λό - γε, τοῦ Θε - οῦ καὶ δύ-να-μις,  
 me - gha, ke i - e - ro-ta-ton Chri-ste, o so - fi-a ke Lo-ghe, tou The-ou ke dhi-na-mis,



δί - δου ἡ - μῖν ἐ - κτυ - πώ-τε-ρον, σοῦ με-τα - σχεῖν, ἐν τῇ Ἄ-νε - σπέ-ρω ἡ-  
 dhi-dhou i - min e - kti - po-te-ron, sou me-ta - schin, en ti A-ne - spe - ro i-



- μέ-ρα τῆς βα-σι - λεί - ας σου. καὶ νῦν καὶ ἀ - εἰ καὶ εἰς τοὺς αἰ - ῶ-νας τῶν αἰ-  
 - me-ra tis va-si - li - as sou. ke nin ke a - i ke is tous e - o-nas ton e-



- ὠ-νων. Ἄ-μῆν. Χαῖ-ρε Παρ - θέ-νε, χαῖ-ρε. Χαῖ - ρε εὐ-λο-γη - μέ - νη, χαῖ-ρε δε - δο - ξας  
 - o-non. A-min. Che-re Par-the-ne, che-re. Che - re ev-lo-ghi - me - ni, che-re dhe-dho-xas



με - νη, σὸς γάρ Υἱ-ὸς ἀ - νεσ-στη, τρι - ἡ-με-ρος ἐκ τά - φου. Ὡ Πά - σχα τὸ  
 me - ni, sos ghar Ii-os a - nes-sti, tri - i-me-ros ek ta - fou. O Pa-scha to

